



Lodge Close  
Hertford, SG14 3DH  
Guide price £865,000



# Lodge Close, Hertford, SG14 3DH

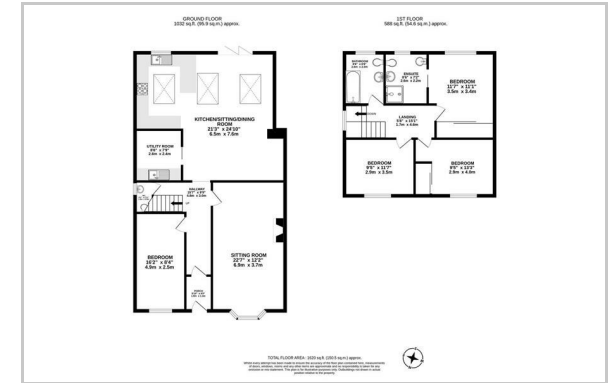
Greenhill Estates are delighted to bring to the market this meticulously remodelled, refurbished, and redesigned detached residence, offering an impressive 1620 sq ft of high-specification living space. Every inch of the home has been considered, from the premium finishes to the intelligent reconfiguration of the layout, creating a stunning, flush double-fronted home that seamlessly blends contemporary luxury with practical family living. Originally a traditional four-bedroom unmodernised house, the property has undergone a complete architectural transformation. This includes a substantial rear extension, a front extension to the lounge and porch to create a flush-fronted aesthetic, a professional garage conversion, and a total remodel of the upstairs to redesign the first floor into three larger bedrooms and two bathrooms.



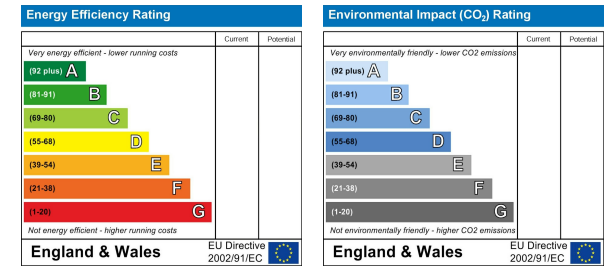
## Area Map



## Floor Plan



## Energy Efficiency Graph



These particulars, whilst believed to be accurate are set out as a general outline only for guidance and do not constitute any part of an offer or contract. Intending purchasers should not rely on them as statements of representation of fact, but must satisfy themselves by inspection or otherwise as to their accuracy. No person in this firm's employment has the authority to make or give any representation or warranty in respect of the property.